

Professional MS Option

Prepare for leadership roles in managing geospatial projects and programs

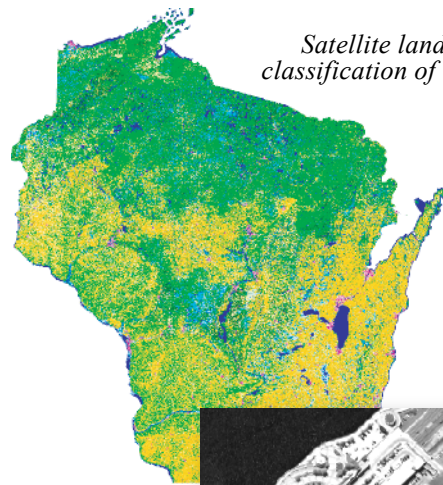
The Non-thesis Professional Masters Degree is designed to provide mid-career professionals and talented recent graduates with real world experience in managing complex projects and rapidly evolving applications in the commercial, government, and natural resources sectors.

Students gain technological expertise in remote sensing, satellite remote sensing, geographic information systems (GIS), the global positioning system (GPS), image processing, photogrammetry and supporting technologies throughout the two-year program.

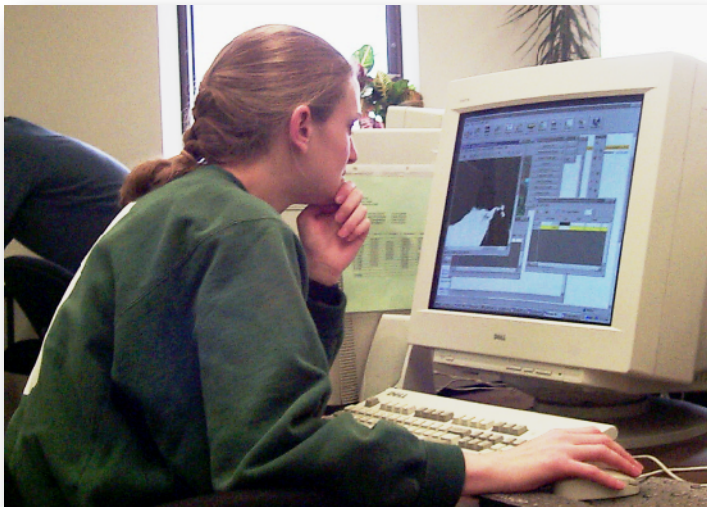
Experiences gained through internships, a practicum or supervised independent study (for working professionals) facilitate transitions to rewarding careers in the expansive geospatial marketplace. The Sloan Foundation has sponsored the development of this degree as an innovative national model "Science Masters" program.



Professional MS student DeAnne Stevens collects data along a geolocated transect with a gravimeter in Alaska.



Satellite land cover classification of Wisconsin

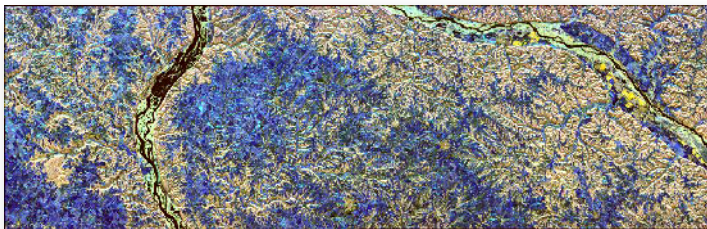


Professional Masters student Hannah Jensen processes satellite imagery.

2002 QuickBird satellite image of Madison showing the State Capitol and Monona Terrace at sub-meter resolution. View looking South.



QuickBird multispectral image of Madison, Wisconsin.



SIR-C radar image of the lower Wisconsin and Mississippi Rivers, and the hilly terrain of the "Driftless Area."



for more information visit
<http://www.ersc.wisc.edu>